

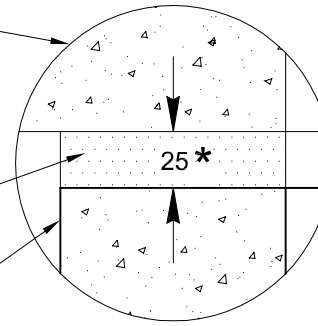
NOTES

1. CONCRETE STRENGTH TO BE 50 MPa
2. REINFORCEMENT TO COMPLY WITH AS4671 & AUS PITS COMPUTATIONS
3. ALL DIMENSIONS ARE IN MILLIMETRES U.N.O.
4. DRAWINGS ARE NOT TO SCALE
5. STEP IRONS JFH255 OR EQUIVALENT ARE TO BE INSTALLED TO PROJECT REQUIREMENTS
6. FOR PIT SIZES AVAILABLE, PLEASE REFER TO TABLE OF PIT SIZES IN THE AUS PITS CATALOGUE

PRE-CAST CONCRETE COVER UNIT

NON-SHRINK OR MASTIC TYPE PRODUCT

PRE-CAST CONCRETE PIT



DETAIL 'A'
ENLARGED VIEW

* THIS DIMENSION CAN VARY TO SUIT PROJECT REQUIREMENTS

FOR COVER DETAILS, PLEASE REFER TO AUS PITS DWG. NO. AP-SD-C-012 COVER TO BE FITTED BY OTHERS ONSITE.

CUTOUT AT FRONT OF PRE-CAST PIT TO ALLOW KERB & CHANNEL MACHINE TO PASS THROUGH

TO PROJECT AND AUTHORITY REQUIREMENTS

PENETRATIONS CUSTOM CAST INTO EACH PIT AS REQUIRED. PIPES SUPPLIED & INSTALLED BY OTHERS ONSITE.

INSITU KERB & CHANNEL POURED BY OTHERS ONSITE

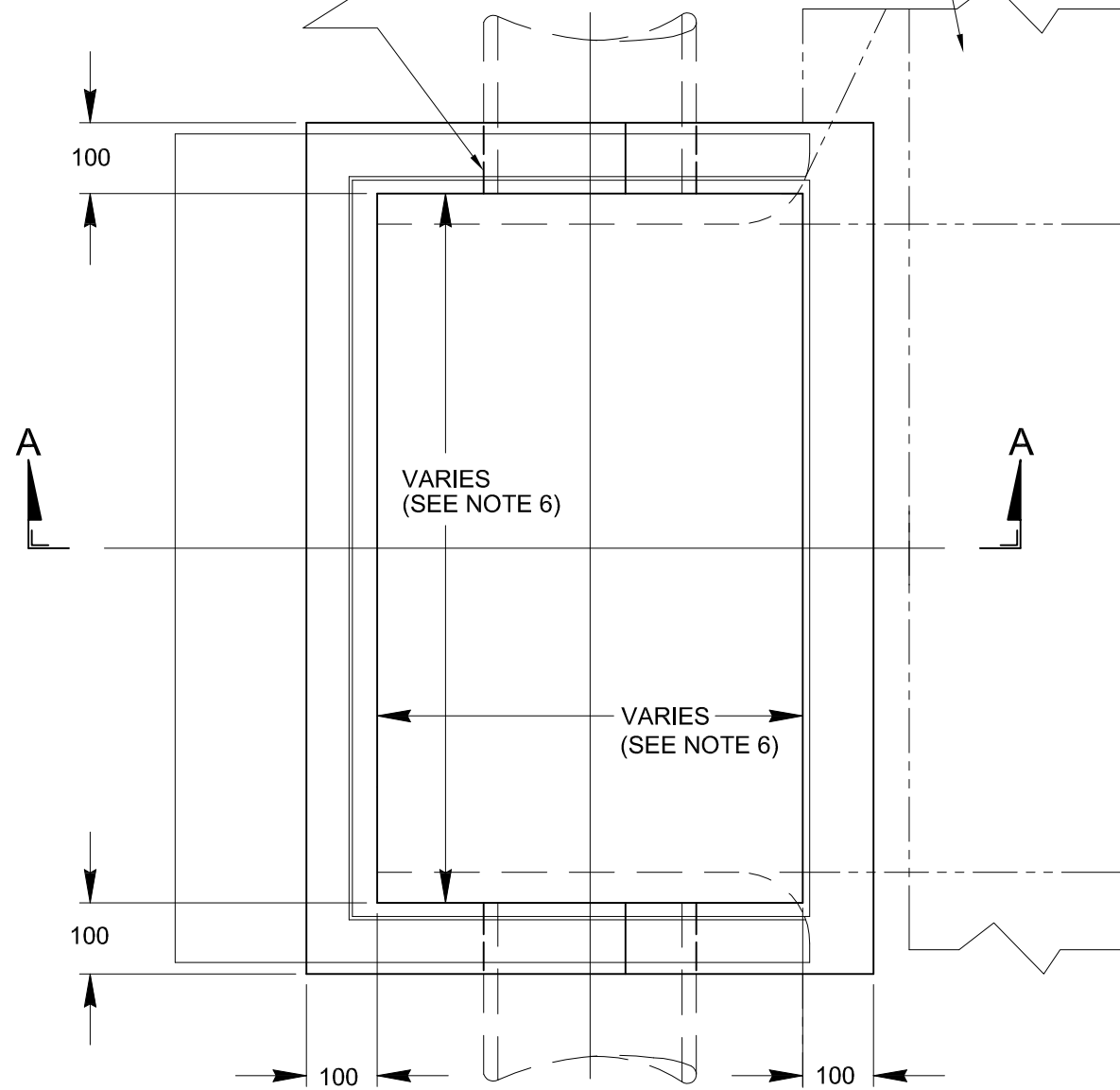
REBATE JOINTS PROVIDED AS REQUIRED FOR PITS > 2M DEEP

PRE-CAST CONCRETE PIT WITH 100mm THICK WALLS & BASE

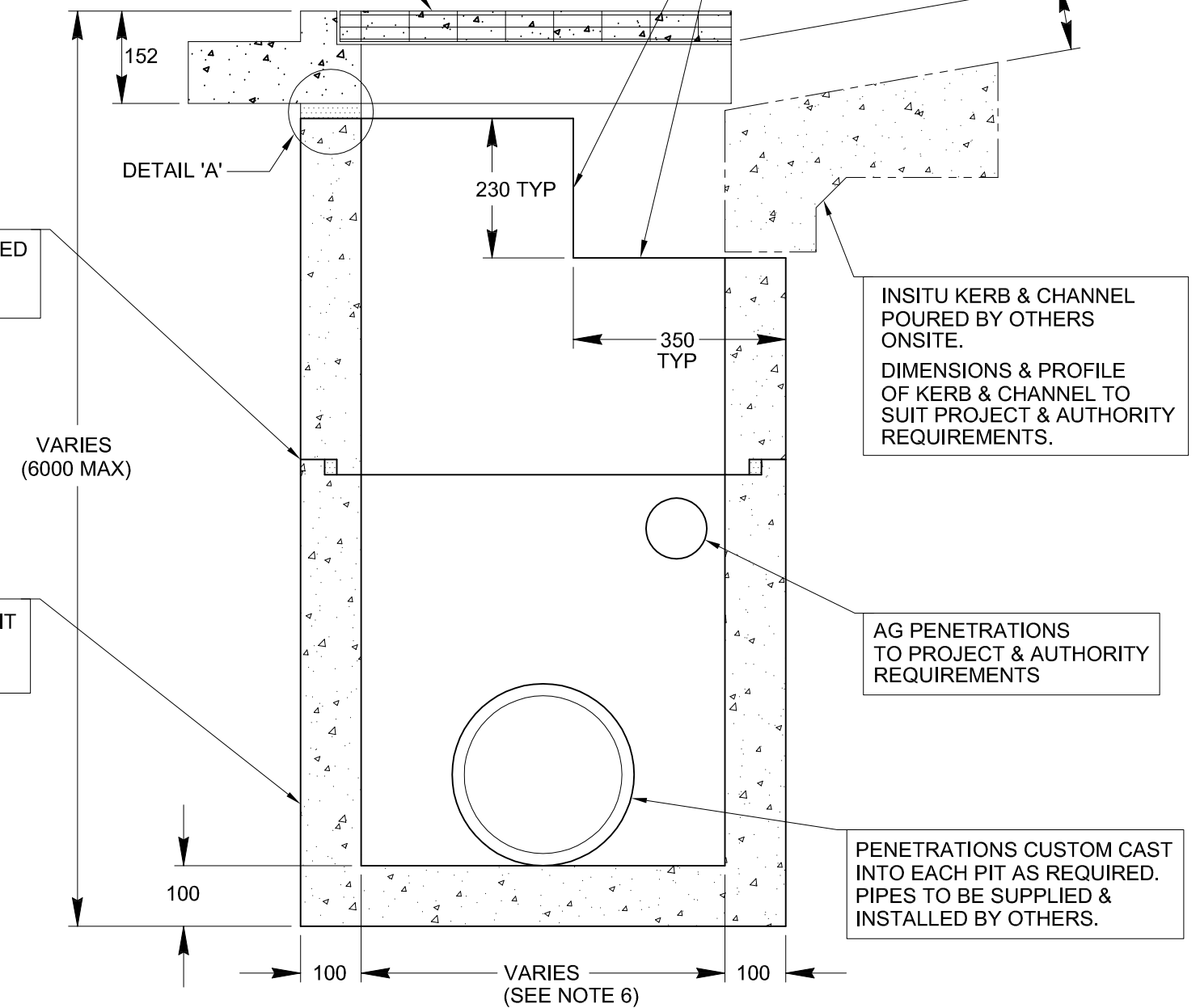
INSITU KERB & CHANNEL POURED BY OTHERS ONSITE. DIMENSIONS & PROFILE OF KERB & CHANNEL TO SUIT PROJECT & AUTHORITY REQUIREMENTS.

AG PENETRATIONS TO PROJECT & AUTHORITY REQUIREMENTS

PENETRATIONS CUSTOM CAST INTO EACH PIT AS REQUIRED. PIPES TO BE SUPPLIED & INSTALLED BY OTHERS.



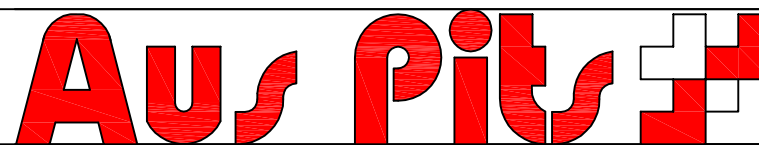
PLAN VIEW OF PIT



SECTION A-A

DWG. NOT TO SCALE

REVISION	DATE	DETAILS	INITIALS
	JUL 09	INITIAL DESIGN	



STANDARD DRAWING			
SIDE ENTRY PIT - CAST IRON BARRIER INSERT			
TYPICAL DETAILS			
DRAWN BY: G.J.F.	APPROVED BY: P. MOULTON	DRG NO: AP-SD-SW-016	REV: 0