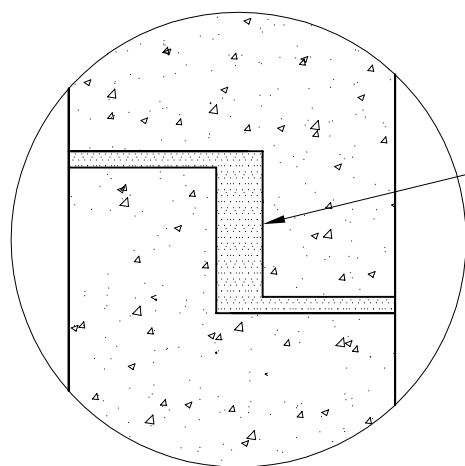


NOTES

1. CONCRETE STRENGTH TO BE 50 MPa
2. ALL DIMENSIONS IN MILLIMETRES U.N.O.
3. DRWGS ARE NOT TO SCALE
4. REINFORCEMENT IN ACCORDANCE WITH AS4671 AND AUS PITS COMPUTATIONS
5. STEP IRONS JFH255 OR EQUIVALENT ARE TO BE INSTALLED TO PROJECT REQUIREMENTS
6. FOR PIT SIZES AVAILABLE, PLEASE REFER TO TABLE OF PIT SIZES IN THE AUS PITS CATALOGUE
7. WHERE A SUBSOIL DRAIN IS DISCHARGED INTO A PIT, THE OUTLET OF THE SUBSOIL DRAIN SHALL BE LOCATED ABOVE THE OBVERT OF THE PIPES / CULVERTS UNLESS OTHERWISE APPROVED.
8. GRATES & FRAMES TO BE HOT DIPPED GALVANISED & COMPLY WITH AS3996. GRATES TO BE HINGED & HAVE A POSITIVE MECHANICAL RETAINER TO SECUTE THEM IN PLACE WHEN IN THE OPEN POSITION.



DETAIL 'A'

JOINT TO BE FILLED WITH A NON-SHRINK GROUT OR MASTIC TYPE PRODUCT DURING CONSTRUCTION TO PROJECT AND AUTHORITY SPECIFICATIONS

FOR PROFILE OF PIT TOP & COVER TYPE REFER TO PIT SCHEDULE, RELEVANT AUS PITS DWG. & AUTHORITY STD. DWG.

GROUND LEVEL

PIT HAUNCHED TO OPENING SIZE REQUIRED BY PIT SCHEDULE AND THE RELEVANT STANDARD DRAWING.

REBATE JOINTS PROVIDED AS REQUIRED FOR PITS > 2M DEEP

250mm THICK HAUNCH SLAB OR CORBELL

DETAIL 'A'

VARIES 5000 MAX.

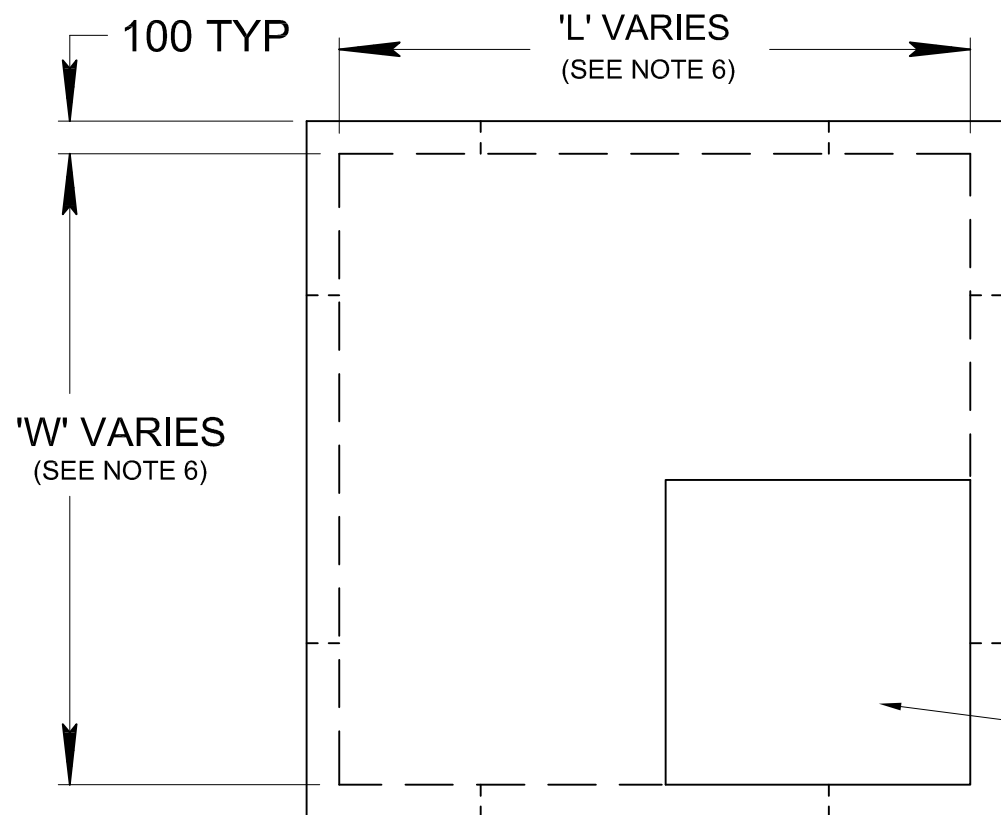
PENETRATIONS CUSTOM CAST INTO WALLS AS REQUIRED. PIPES TO BE SUPPLIED & INSTALLED BY OTHERS ONSITE

PRE-CAST CONCRETE PIT WITH 100mm THICK WALLS & BASE

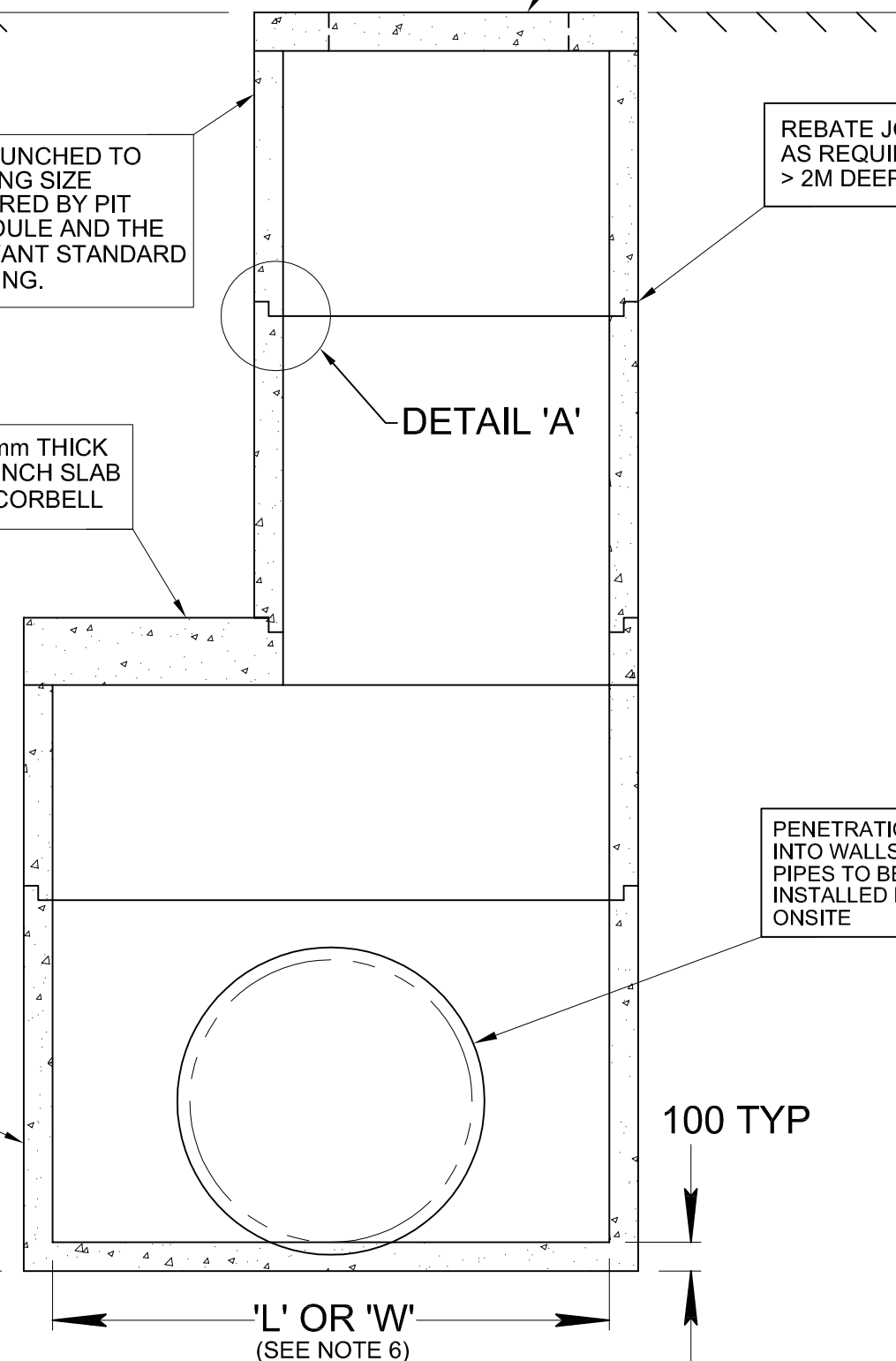
OPENING IN HAUNCH SLAB OR CORBELL

100 TYP

'L' OR 'W'
(SEE NOTE 6)



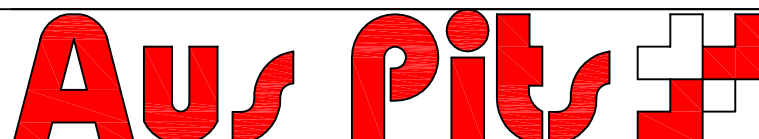
TYPICAL PLAN VIEW



TYPICAL SECTION VIEW

DWG. NOT TO SCALE

REVISION	DATE	INITIALS	DETAILS
	NOV 09		INITIAL DESIGN



STANDARD DRAWING			
HAUNCHED PIT TO SUIT QDMR			
TYPICAL DETAILS			
DRAWN BY: G.J.F.	APPROVED BY: P. MOULTON	DRG NO: AP-SD-SW-004	REV: 0