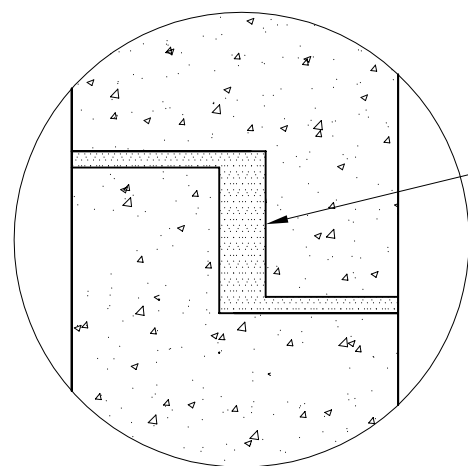


**NOTES**

1. CONCRETE STRENGTH TO BE 50 MPa
2. ALL DIMENSIONS IN MILLIMETRES U.N.O.
3. DRWGS ARE NOT TO SCALE
4. REINFORCEMENT IN ACCORDANCE WITH AS4671 AND AUS PITS COMPUTATIONS
5. STEP IRONS JFH255 OR EQUIVALENT ARE TO BE INSTALLED TO PROJECT REQUIREMENTS
6. FOR PIT SIZES AVAILABLE, PLEASE REFER TO TABLE OF PIT SIZES IN THE AUS PITS CATALOGUE



**DETAIL 'A'**

JOINT TO BE FILLED WITH A NON-SHRINK GROUT OR MASTIC TYPE PRODUCT DURING CONSTRUCTION TO PROJECT AND AUTHORITY SPECIFICATIONS

FOR PROFILE OF PIT TOP & COVER TYPE REFER TO PIT SCHEDULE, RELEVANT AUS PITS DWG. & AUTHORITY STD. DWG.

GROUND LEVEL

PIT HAUNCHED TO OPENING SIZE REQUIRED BY PIT SCHEDULE AND THE RELEVANT STANDARD DRAWING.

REBATE JOINTS PROVIDED AS REQUIRED FOR PITS > 2M DEEP

250mm THICK HAUNCH SLAB OR CORBELL

**DETAIL 'A'**

VARIES 6000 MAX.

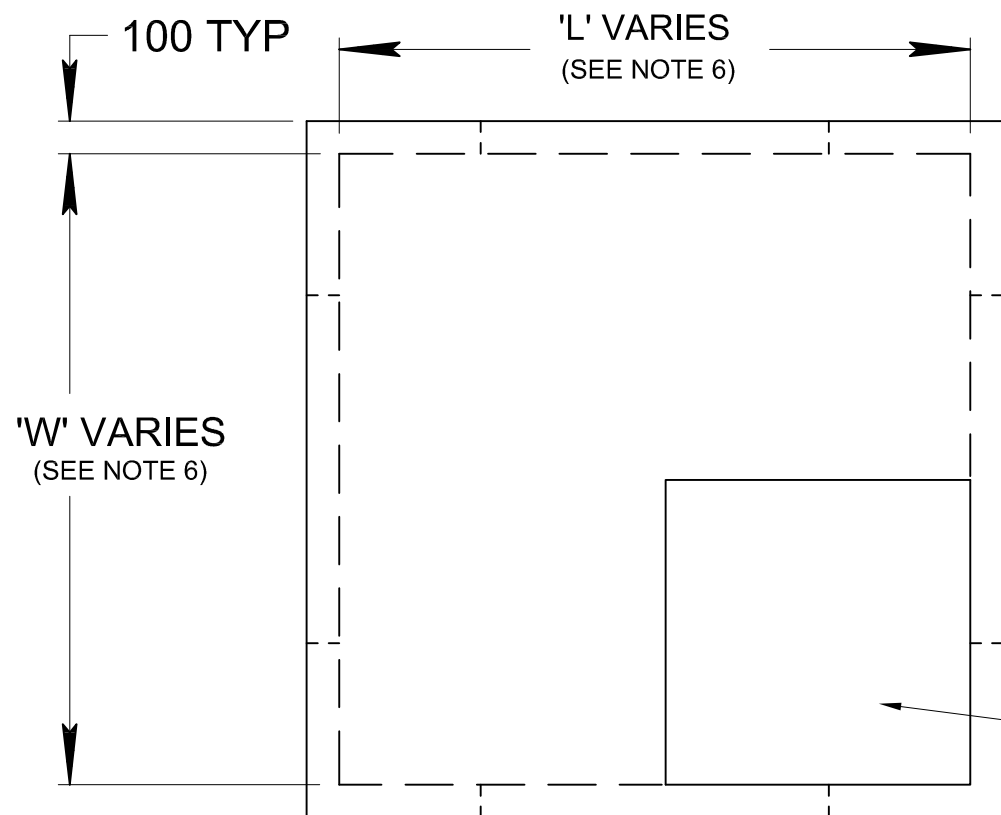
PENETRATIONS CUSTOM CAST INTO WALLS AS REQUIRED. PIPES TO BE SUPPLIED & INSTALLED BY OTHERS ONSITE

PRE-CAST CONCRETE PIT WITH 100mm THICK WALLS & BASE

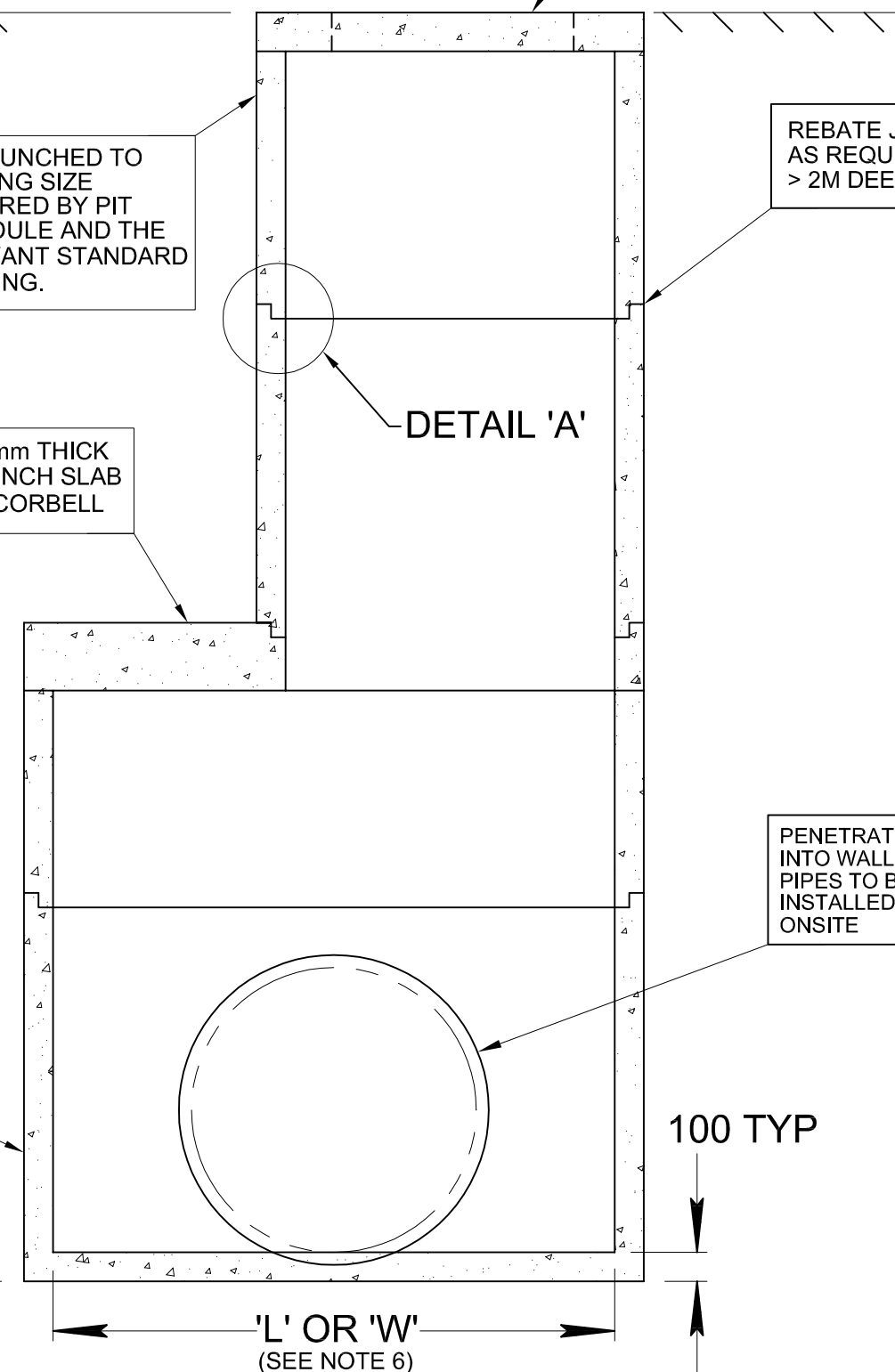
OPENING IN HAUNCH SLAB OR CORBELL

100 TYP

'L' OR 'W'  
(SEE NOTE 6)



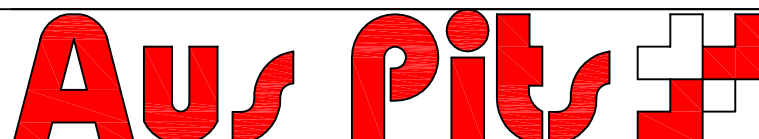
**TYPICAL PLAN VIEW**



**TYPICAL SECTION VIEW**

**DWG. NOT TO SCALE**

REVISION	DATE	INITIALS	DETAILS
	NOV 09		INITIAL DESIGN



STANDARD DRAWING-FOR USE OUTSIDE VICTORIA			
HAUNCHED PIT			
TYPICAL DETAILS			
DRAWN BY:	APPROVED BY:	DRG NO:	REV:
G.J.F.	P. MOULTON	AP-SD-SW-002	0