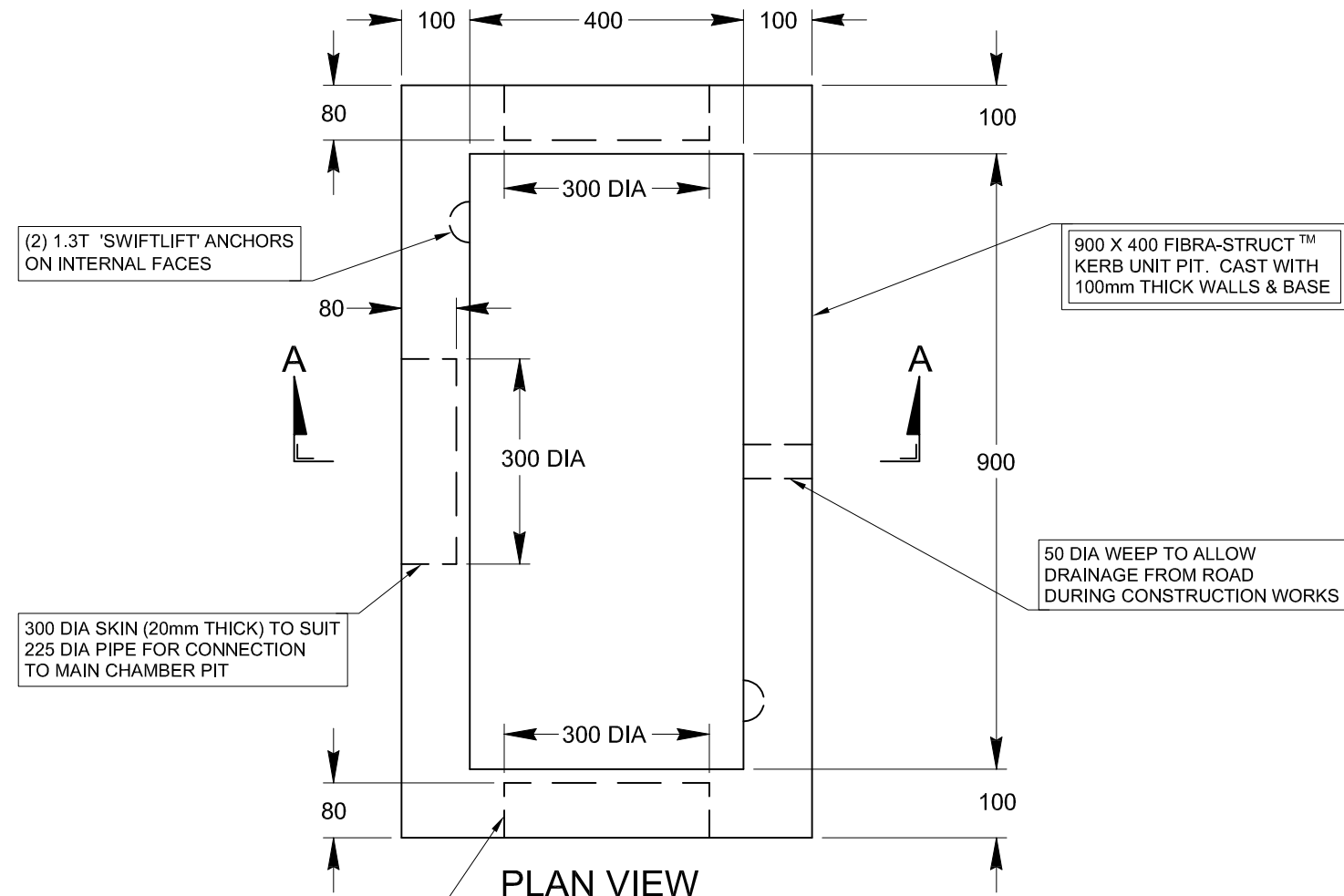


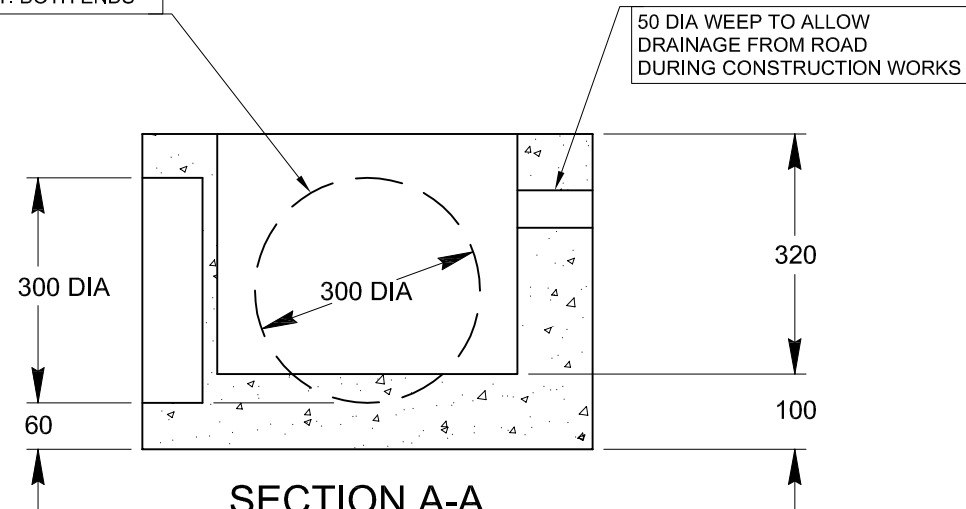
NOTES

1. CONCRETE STRENGTH OF KERB UNIT PIT TO BE 60 MPa
2. CONCRETE STRENGTH OF KERB UNIT TOPSLAB TO BE 40MPa
3. REINFORCEMENT TO COMPLY WITH AS4671 & AUS PITS COMPUTATIONS
4. ALL DIMENSIONS ARE IN MILLIMETRES U.N.O.

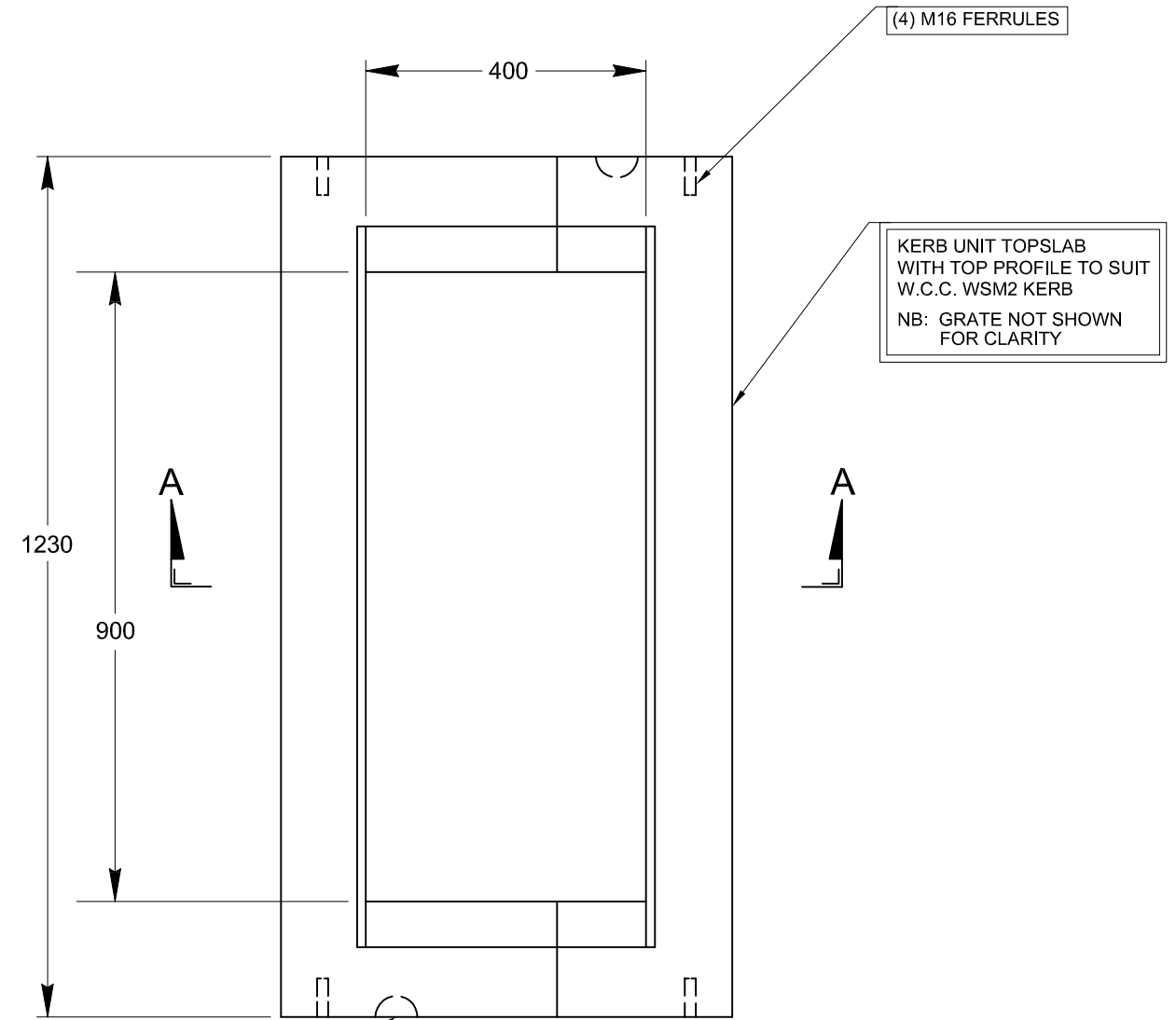


PLAN VIEW
KERB UNIT PIT

300 DIA SKIN (20mm THICK) TO SUIT 225 DIA PIPE FOR POSSIBLE CONNECTIONS INTO SIDE OF KERB UNIT PIT. BOTH ENDS

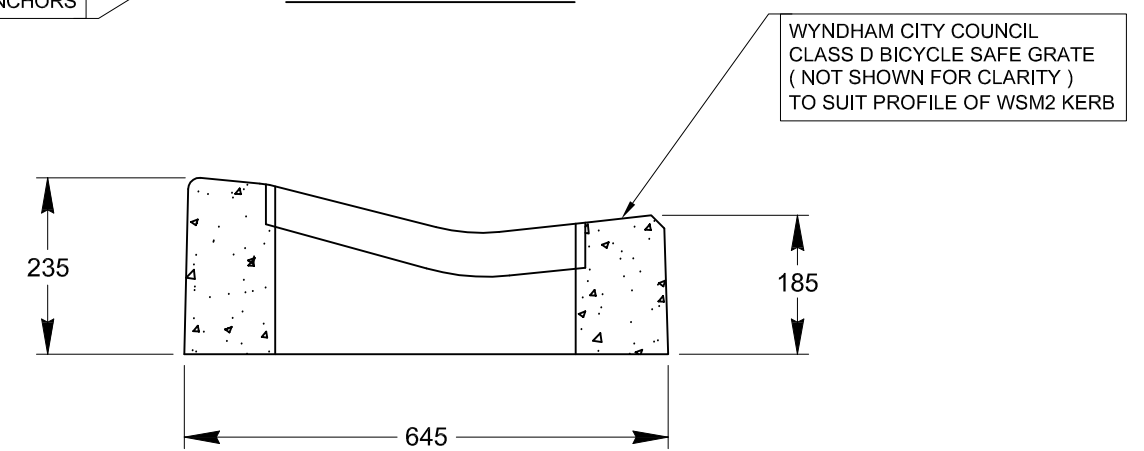


SECTION A-A
KERB UNIT PIT



PLAN VIEW
KERB UNIT TOPSLAB

(2) 1.3T 'SWIFTLIFT' ANCHORS



SECTION A-A
KERB UNIT TOPSLAB

DWG. SCALE 1:10

REVISION	DATE	DETAILS	INITIALS
	JUL 09	INITIAL DESIGN	

Aus Pits

STANDARD DRAWING			
KERB UNIT PIT AND TOPSLAB TO SUIT WYNDHAM CITY COUNCIL WSM2 KERB			
DRAWN BY: G.J.F.	APPROVED BY: P. MOULTON	DRG NO. AP-SD-C-002	REV: 0